

**METHODS AND MEANS FOR DATA ACQUISITION,  
DATA ANALYSIS AND INFORMATION MANAGEMENT  
– IMPLEMENTATION OF THE METER DATA  
MANAGEMENT SOLUTION**

***METODE ȘI MIJLOACE PENTRU ACHIZIȚIA DE DATE,  
ANALIZA DATELOR ȘI GESTIONAREA INFORMAȚIILOR  
– IMPLEMENTAREA SOLUȚIEI DE GESTIONARE A  
DATELOR DE CONTORIZARE***

Mihaela IORDACHE<sup>1</sup>, Liliana SIRGHIE<sup>2</sup>, George BACIU<sup>3</sup>

10.37410/EMERG.2025.3.06

***Abstract:** A key aspect of smart infrastructure for electricity is implementing Meter Data Management (MDM) for the entire portfolio of consumption points. The paper presents the experience of implementing the Meter Data Management solution at Delgaz Grid S.A., outlining the steps for data migration, methods for interfacing with metering devices, data flow optimizations, and performance analysis mechanisms. Specifically, the scientific contribution of this project includes integrating efficient transfer protocols and advanced functions for daily interval data correction, reactive power or loss calculations, and data and process synchronization. The applied solutions leverage a scalable and secure infrastructure capable of managing large volumes of real-time data, ensuring high interoperability between the MDM central platform, metering devices, billing systems, and interconnections with other entities. This flexible, load-resistant structure allows for efficient resource allocation and enhanced operational performance.*

**Keywords:** Meter Data Management implementation, migration, collection, synchronisation, interconnection

---

<sup>1</sup> Head of Strategy and Performance for Systems and Processes, Delgaz Grid SA, Romania, e-mail: [mihaela.iordache@delgaz-grid.ro](mailto:mihaela.iordache@delgaz-grid.ro)

<sup>2</sup> Director of Contracts and Energy Management Division, Delgaz Grid SA, Romania, [e-mail: liliana.sirghie@delgaz-grid.ro](mailto:liliana.sirghie@delgaz-grid.ro)

<sup>3</sup> Senior Product Manager, Delgaz Grid SA, Romania, [e-mail: george.baciu@delgaz-grid.ro](mailto:george.baciu@delgaz-grid.ro)

**Rezumat:** *Un aspect esențial al infrastructurii inteligente pentru energie electrică este implementarea unui sistem de gestionare a datelor de contorizare (Meter Data Management – MDM) pentru întregul portofoliu de puncte de consum. Lucrarea prezintă experiența implementării soluției de gestionare a datelor de contorizare în cadrul Delgaz Grid S.A., evidențiind etapele de migrare a datelor, metodele de interfațare cu echipamentele de măsurare, optimizările fluxurilor de date și mecanismele de analiză a performanței. Contribuția științifică specifică a acestui proiect include integrarea unor protocoale eficiente de transfer și a unor funcții avansate pentru corectarea zilnică a datelor pe intervale, calculul puterii reactive sau al pierderilor, precum și sincronizarea datelor și a proceselor. Soluțiile aplicate utilizează o infrastructură scalabilă și securizată, capabilă să gestioneze volume mari de date în timp real, asigurând o interoperabilitate ridicată între platforma centrală MDM, echipamentele de măsurare, sistemele de facturare și interconexiunile cu alte entități. Această structură flexibilă și rezistentă la sarcini mari permite o alocare eficientă a resurselor și îmbunătățirea performanței operaționale.*

**Cuvinte cheie:** Implementare a sistemului de gestionare a datelor de contorizare, migrare, colectare, sincronizare, interconectare

## 1. Introduction

In recent years, the accelerated pace of technological innovation has reshaped the energy sector, driven by the transition to smart grids and the widespread adoption of digital technologies. These changes have created an imperative for advanced, quality-focused solutions to manage the vast streams of data and information generated by complex electricity distribution systems. The emergence of smart meters has elevated data management from a supporting role to a cornerstone of modern energy infrastructure, ensuring reliability, precision, and value creation.

The authors highlight that Meter Data Management (MDM) represents a state-of-the-art solution designed to ensure the quality, integrity, and utility of meter-generated data. It encompasses data acquisition, processing, validation, and application, contributing to the optimization of operational processes, strategic decision-making, and the achievement of sustainability objectives. By integrating MDM systems, energy providers can enhance operational efficiency, reduce system losses, and significantly improve customer satisfaction. Moreover, MDM enables robust data analysis, empowering organizations to uncover actionable insights, predict consumption trends, and craft energy management strategies tailored to dynamic market needs.

This paper contains analyses and technical details from the implementation of the MDM solution at Company, emphasizing its impact on data quality management, system architecture, and integration strategies. It further explores the benefits achieved, including improved decision-making enabled by real-time, accurate, and reliable information. By consolidating data from diverse sources, the architecture of the MDM system, as shown in Figure 1, provides a unified and comprehensive perspective on the distribution network, supporting the company's commitment to operational excellence and the continuous improvement of energy service quality.

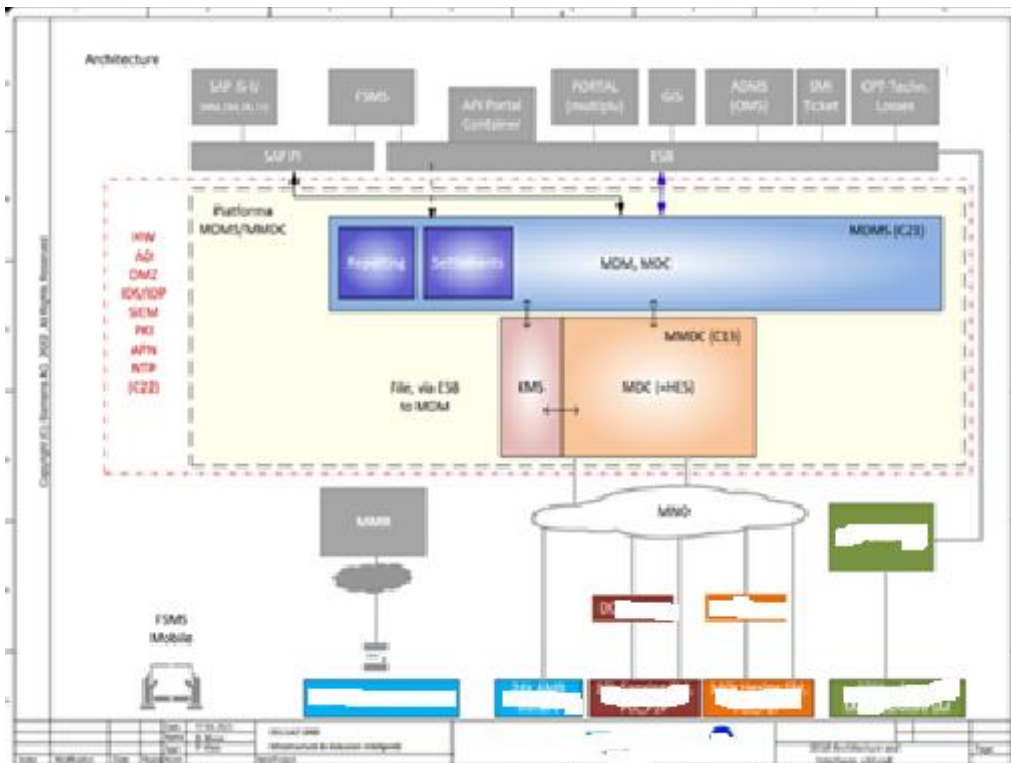


Fig 1. Meter Data Management Architecture

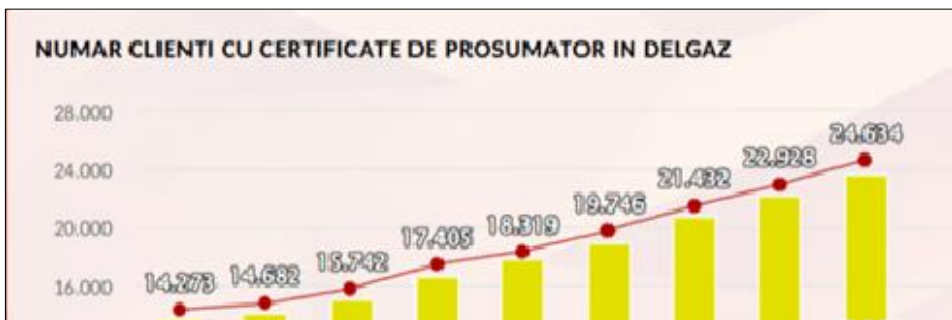
## 2. The Context and Necessity of Implementing MDM Solutions

In an increasingly complex energy landscape, marked by rapid changes and a growing demand for sustainability, the efficient management of consumption data has become a cornerstone of operational strategy and strategic decision-making in the energy sector. The rapid transformations in

this field, driven by the global shift toward renewable energy sources and the increasing interconnection of systems, have heightened the need for advanced technologies such as Meter Data Management (MDM) solutions.

Traditional metering solutions, which relied on manual meter readings or periodic, fragmented data collection, are no longer fast, accurate, or flexible enough to meet contemporary demands. Authors consider the transition to smart meters and smart grids has created a new paradigm in which the volume and complexity of data require automated, scalable, and secure processing solutions. In this context, MDM systems are critical to ensuring the integration and optimal utilization of network data.

As renewable energy sources (such as solar and wind power) gain increasing importance, as statistically illustrated in the figure 2, they introduce a significant challenge: the transition to renewables has a profound impact on networks and on the complexity of their management. These sources are intermittent and weather-dependent, making the management of energy flows within networks highly complex. The Meter Data Management platform enables the processing and real-time access to smart meter data, providing the essential insights required to optimize energy flows.



**Fig 2.** The Evolution of Prosumers in 2024

Traditional electrical grids are evolving into smart grid models, where increased interconnectivity and digitalization generate an enormous volume of data that must be collected, validated, and analyzed. Without scalable solutions such as Meter Data Management (MDM), these grids risk becoming overwhelmed by the complexity of data management.

The authors draw attention to the fact that the MDM solution was implemented to address the challenges of integrating data from smart meters into a centralized network. By leveraging a modern MDM system, the

company can manage data in real time, reducing latency and improving the reliability of operations.

### **3. The Necessity of a Centralized Management System**

A centralized data management system, such as MDM, offers several significant advantages over traditional methods. Acting as an integrated platform, MDM collects, validates, and analyzes data from the metering network. It eliminates labor-intensive manual processes, optimizes workflows, and helps reduce operational costs.

Authors consider that the role of centralization in data management is crucial for overcoming the critical challenges faced by distribution companies in the absence of an efficient centralized system. Without such a solution, data inconsistency arises, as manual or fragmented processes can lead to discrepancies between the information collected in the field and the data used for billing or energy forecasting.

Additionally, the authors point out that the companies face operational inefficiencies, as the time required for data collection, validation, and analysis increases exponentially without an automated solution. Moreover, the high risk of errors becomes a constant threat, as the lack of a unified system amplifies the likelihood of processing errors or data loss. Implementing a modern MDM solution addresses these challenges by automating and centralizing workflows, ensuring data coherence and reliability.

Automation of data collection and analysis processes is another major advantage of the MDM solution. This includes real-time data collection, automatic data validation, and advanced analysis.

### **4. Implementation of the MDM Solution at Company**

The authors emphasize the importance of the implementation of the Meter Data Management (MDM) solution represents a significant step in the evolution of the intelligent electricity distribution infrastructure. The implementation project was carried out in a context where the need to optimize data collection, analysis, and management processes became increasingly urgent. In this chapter, we will briefly present the stages of the implementation process and the challenges encountered during the deployment of the MDM solution.

#### ***4.1 The Stages of the Implementation Process***

By assessing the impact, the authors highlight that the implementation of the MDM solution at the company was a complex process, structured into more than 20 essential stages. Each stage played a role in ensuring the seamless integration of the new solutions without disrupting the company's current operations, while also optimizing resource utilization and the overall infrastructure performance. The process was closely monitored and controlled to ensure the achievement of the proposed objectives.

The first step in implementing the MDM solution was conducting a thorough analysis of Company's needs, as well as the technical and business requirements. During this phase, the essential project objectives were established, and a detailed assessment of the existing systems was conducted. Thus, the specialist teams identified parameters that required improvements, such as the manual processes for data collection and validation, as well as the need for better synchronization between the billing system and the metering data management systems.

Following the detailed analysis of the needs and specific requirements, a comprehensive and well-structured implementation plan was developed, aimed at ensuring a smooth transition to the MDM platform. The plan included defining the necessary resources, setting realistic deadlines, and outlining the responsibilities of each team involved, both from the development partners and from Company.

Another key aspect of the implementation plan was optimizing the process of migrating historical data to the MDM platform. The use of advanced validation algorithms ensured data integrity, eliminating the risk of loss or corruption of critical information. Additionally, the seamless integration of newly collected data from the field with historical data contributed to the continuity of operations and the maintenance of a consistent database.

Thus, authors emphasize that implementation plan served not only as an operational guide but also as a strategic tool that allowed all parties involved to align their objectives and collaborate efficiently. This approach demonstrated the importance of rigorous planning and solid partnerships in managing complex technological projects, offering valuable lessons for future initiatives in the energy sector.

The migration of historical data represented a crucial stage in the implementation of the MDM solution, having a significant impact on the continuity and reliability of the company's operations, being carried out

according to the implementation schedule shown in Figure 3. The process involved transferring a massive volume of data from various sources and legacy systems to the new centralized platform, requiring a highly meticulous and methodical approach. Due to the diversity of sources and the heterogeneous structure of the data, the migration was carried out gradually in several stages. This phased approach aimed to minimize the risks associated with the loss of critical information or the occurrence of errors in the final database. This stage was not only a technical transfer of information but also an opportunity to optimize the database. The migration process allowed for the elimination of redundant or irrelevant records and the reorganization of the data into a more efficient structure. The success of the migration provided a solid foundation for future operations, reducing risks associated with inconsistent data and improving the quality of information used in both operational and strategic processes.

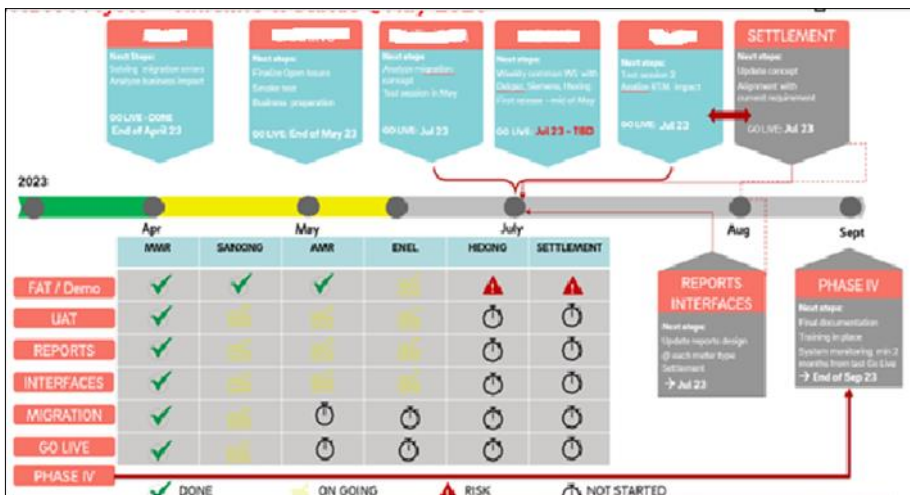


Fig 3. High-Level Phase Planning

### 4.2 Challenges Faced and Solutions Implemented

The authors point out that the implementation of the MDM solution was a challenging process due to the technological complexity and the large volume of data processed daily. This section will examine the key challenges faced during the implementation and the solutions adopted to overcome them.

One of the greatest challenges encountered during the implementation of the MDM solution at Company was managing the high volume of data.

Additionally, scalable storage solutions were implemented to support the long-term storage of large data volumes. With this approach, Company was able to not only handle data-related challenges but also significantly improve operational efficiency and support long-term strategic decision-making.

Integration with existing systems was another major obstacle in the implementation of the MDM solution at Company. Many of the existing systems (e.g., SAP, AMMS) were not compatible with the new metering and data collection technologies used by smart meters. This required the development, replacement, or optimization of technical solutions that would enable the integration of these disparate platforms, ensuring a continuous data flow and minimizing error risks. To overcome these challenges, Company used middleware solutions, as described in Figure 4, that ensured interconnection between the new data collection platforms and legacy systems (e.g., PI, ESB). These solutions acted as an interface layer between new technologies and existing systems, enabling fast and secure data transfer between them.

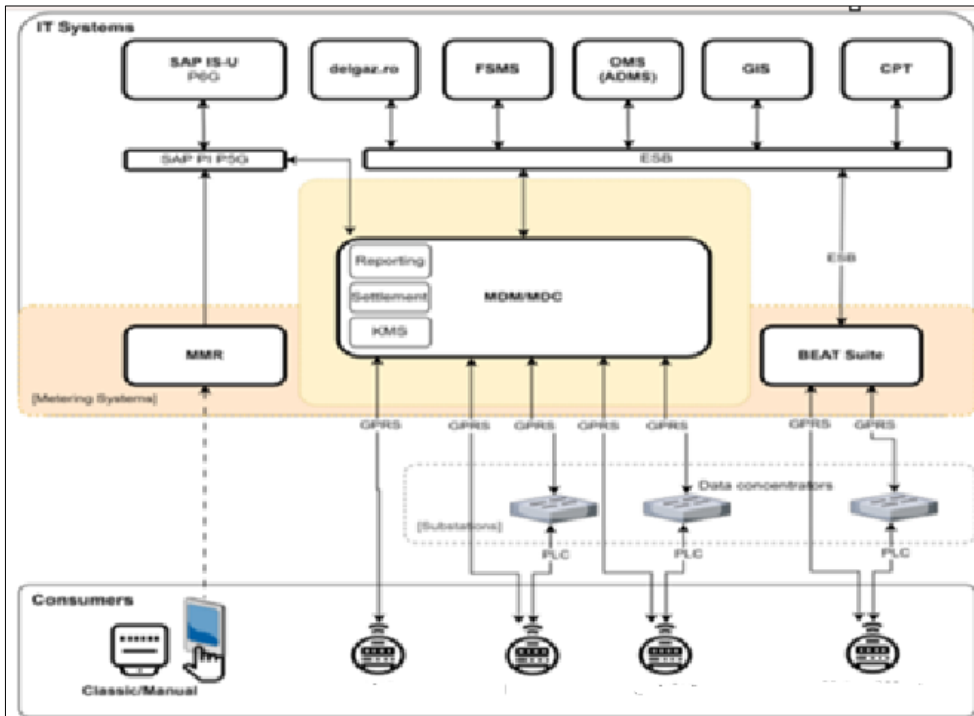


Fig 4. System Architecture, including middleware

Ensuring data security was a crucial aspect in the implementation of the MDM solution at Company, given the sensitivity of the consumption data collected from users. To protect this data and prevent unauthorized access, advanced security measures such as data encryption and multi-factor authentication were implemented. These solutions ensured the confidentiality and integrity of the information processed in the MDM platform, thereby safeguarding consumption data against security risks

## **5. Technical Architecture and Functionalities of the MDM Solution**

An important component noted by the authors is in the implementation of Meter Data Management (MDM) solutions, the technical architecture plays a crucial role in ensuring the optimal functioning of the entire system. It must be scalable, reliable, and capable of processing large volumes of data in a short amount of time. The MDM solution adopted by Company is built on a complex technical architecture, which integrates both hardware and software components to collect and analyze data from the smart meters installed in the field. In this chapter, we will explore in detail the technical structure of the MDM solution and the advanced functionalities that contribute to optimizing data management

### ***5.1 Key Components of the MDM System***

Meter Data Management (MDM) system is composed of several essential components that collaborate to collect, validate, analyze, and store data from smart meters. These components are interconnected through secure and efficient communication networks, ensuring that the data flow between the metering devices and the central platform is both fast and reliable.

#### **5.1.1 EnergyIP – The Meter Data Management Solution Implemented**

Traditionally, optimization has focused on generation and distribution, with insufficient consideration given to end-user consumption places. Through the technological development cycle of Advanced Metering Infrastructure (AMI) and "smart meters," we now have the capability to measure consumption at a granular level. Smart meters provide access to consumption data at 15-minute intervals.

EnergyIP® serves as a high-performance data integration platform designed for utility companies in the energy, gas, and water sectors, enabling the collection and processing of consumption data from AMI systems and managing all transactions between the utility and end-user consumption places. eMeter® also creates applications built on top of the platform to address operational issues that are not covered by the company's legacy systems.

- The EnergyIP data repository serves as the "system of record" for consumption and transactional data within the utility.
- The platform manages the execution and history of commands between the utility's operational systems and endpoints (such as remote connection and load settlement).
- The platform handles complex relationships between consumption data and accounts/devices/services.
- EnergyIP acts as a robust development platform for new applications leveraging consumption data, allowing application developers to focus on solving business problems rather than managing data.

### 5.1.2 EnergyIP solution

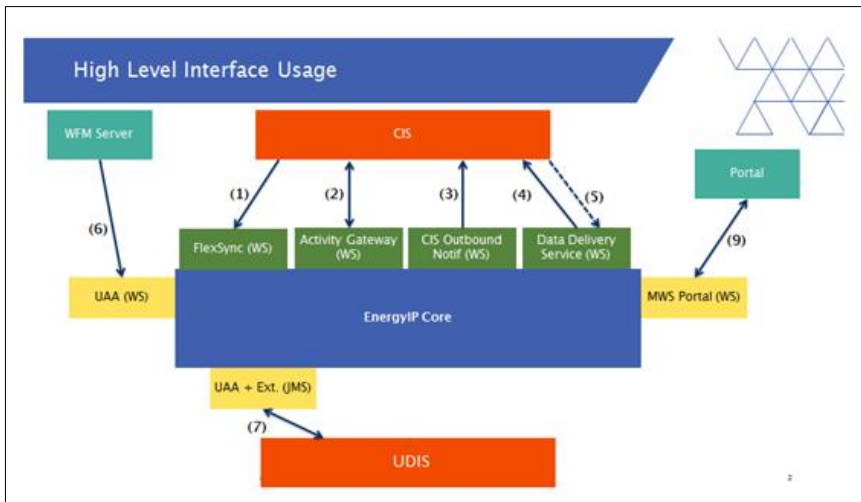
Another subject of in-depth analysis was EnergyIP. At its core, EnergyIP is a platform designed to collect and manage large volumes of energy consumption data and related information, leveraging an event-driven architecture. eMeter was the first company to enter this emerging field of IT technology, and EnergyIP has remained the leading solution in what is now known as Meter Data Management (MDM).

This pioneering status stems in part from its ongoing focus on leveraging new insights from smart meter data to support the needs of AMI operators and the transformation of networks, markets, and customer operations. Through EnergyIP, every part of the organization can rely on the platform as the "system of record" for up-to-date energy consumption information and confidently use that data for a wide range of operational and analytical objectives.

The authors also considered it essential to analyze how the successful collection of data and interaction with various types of field-installed devices is achieved through the use of multiple communication methods and protocols. The core components of the EnergyIP application offer flexible capabilities for processing and preparing data from AMI systems. They perform a variety of validations and integrity checks using configurable rule sets to ensure data readiness for utilization, as illustrated in Figure 5. They perform a variety of validations and integrity checks using configurable rule sets to ensure data readiness for utilization.

These core processes are entirely event-driven, meaning that when data is received at the AMI adapter interface, it is processed and prepared instantly using applications that generate master data, such as SAP I-SU in the case of Company. Once information is recorded in the EnergyIP data repository, it becomes available in near real-time to any application via web service-based standards and APIs.

The key to successfully leveraging this information lies in the ability to integrate it reliably into real-world operations. Main scope of this integration is maintaining an up-to-date reference data model that connects energy consumption data from customer meters to accounts, consumption points, network segments, or other critical real-world reference points. EnergyIP includes a powerful data synchronization engine. Its FlexSync tools and synchronization engine EnergyIP provide a robust means of integrating with multiple disparate systems, gathering relevant reference information from each



**Fig 5.** Interfaces

### 5.1.3 EnergyIP solution

EnergyIP supports business process execution in the form of workflows. To facilitate this, the EnergyIP platform includes its own integrated workflow engine. This enables the definition and execution of business processes using Business Process Modeling Notation (BPMN) 2.0.

Another subject of in-depth analysis was Workflows. Workflows play a crucial role in MDM. They are particularly useful when the business logic to

be executed involves more than a simple synchronized processing step, such as retrieving device information within the EnergyIP data model. Instead, the logic may be distributed across multiple systems or consist of multiple processing stages.

One of the primary tasks of MDM is the integration of SAP with data from the metering infrastructure through the Head End System (HES). The HES translates business processes into transactions executed on the smart meter. Depending on the communication quality, interaction with the smart meter can be unreliable and delayed. This also necessitates extensive error management options, such as retry mechanisms and error code interpretation. Additionally, these processes must run in parallel on thousands of devices. For these reasons, such business logic is always processed asynchronously in EnergyIP.

Workflows are closely linked to the EnergyIP Service Requests (SR) concept. An SR is a work order referring to a specific device or SDP. It defines the type of work order. For example, when an on-demand reading must be executed, an SR for the desired device is generated and stored in the EnergyIP database.

SRs can be generated from various sources, such as:

- Activity Gateway as a result of a request from an external system
- AMI adapter generating an SR through an event detected in the system
- The graphical interface by a user
- A report or job executed periodically.

Workflow executions are visible as closed SRs in the user interface.

#### 5.1.4 Communication Protocols

The protocol used is DLMS/COSEM (Device Language Message Specification / Common Object Services for Energy Metering), widely adopted in the energy industry to ensure reliable and secure communication between meters and data management systems. It facilitates real-time data transfer and guarantees the integrity and security of information.

The centralized MDM platform acts as the "brain" of the system, where all data collected from meters is stored, validated, and analyzed. This includes the software and IT infrastructure required to ensure rapid and accurate data processing. The central platform is responsible for error correction, data validation, and integration of information from various sources, thereby ensuring a consistent and accurate data flow. MDM

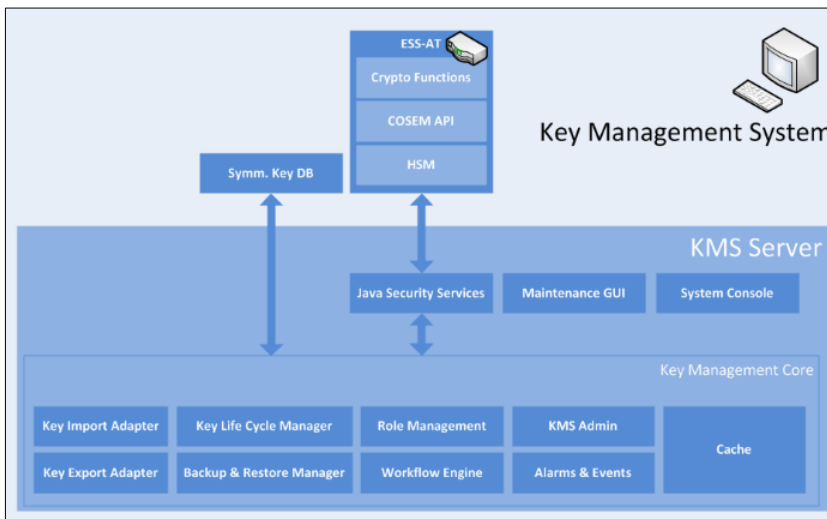
platforms are equipped with real-time monitoring capabilities, allowing operators to access and analyze data at any time. Additionally, they enable integration with other systems, such as billing and energy forecasting systems, thereby facilitating unified process management.

### 5.1.5 KMS system architecture

An important component noted by the authors is the KMS (Key Management System), that is responsible for managing the keys and essential security aspects of MDM and MDC as described in Figure 6.

Its main tasks include:

- various methods of encrypting security keys
- encrypting and decrypting messages
- managing meter keys
- administering the KMS user
- marking keys exported from KMS
- renewing keys (Key Renewal) as necessary (e.g., for key material in the "exported" form)
- monitoring the lifecycle of key material
- providing keys to requesting systems via a defined interface, in conjunction with MDM
- verifying signatures (e.g., Shipment File)



**Fig 6.** KMS System

KMS is composed of the following components: KMS Core Component (Key Management Core); Java Security Services (JSS) Runtime; JSS Maintenance Server/GUI; Key database or key table for symmetric keys. There is no possibility to export keys in plain text format. Export always occurs in an encrypted form. KMS contains a component responsible for the lifecycle management of stored key material. Figure 7 illustrates the diagram of the entire lifecycle:

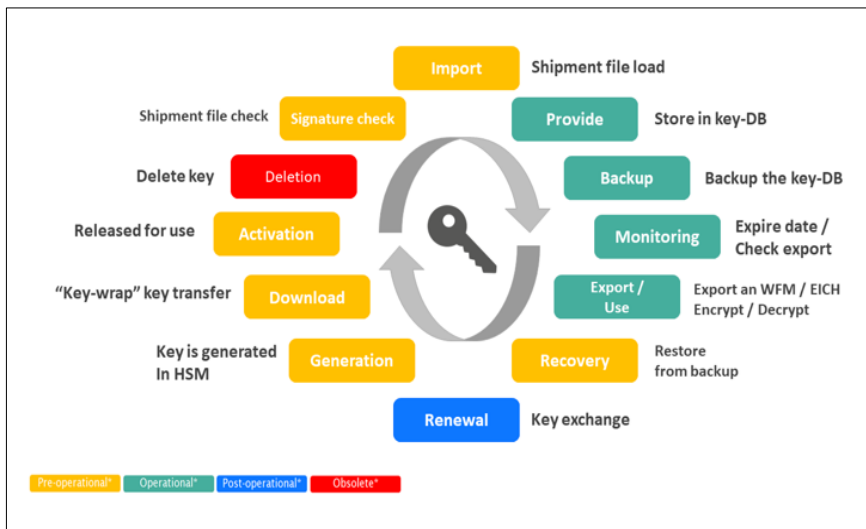


Fig 7. Life cycle of keys

### 5.1.6 MDC Processes

HES (Head End System) is natively integrated into MDM and MOC through web services and file interface. As a front-end system, it operates on its own servers and virtual LAN network.

Siemens provides HES under the name UDIS (Universal Device Integration System), whose configuration is illustrated in Figure 8.

Main functions of MDC (Meter Data Collector): Allocating the scheduling scheme and measurement profile to the meter; Managing data reading tasks scheduled according to the defined scheduling scheme; Transferring read data to MDMS (Meter Data Management System; Updating firmware for meters (P2P, PLC, concentrator); Monitoring scheduled readings via HES GUI (Head End System Graphical User Interface). Communication protocols have been defined and various types of concentrators and meters

have been integrated. Figure 9 presents screenshots from the MDC-GUI interface, illustrating statistical data on the meter reading rate, depending on different equipment manufacturers.

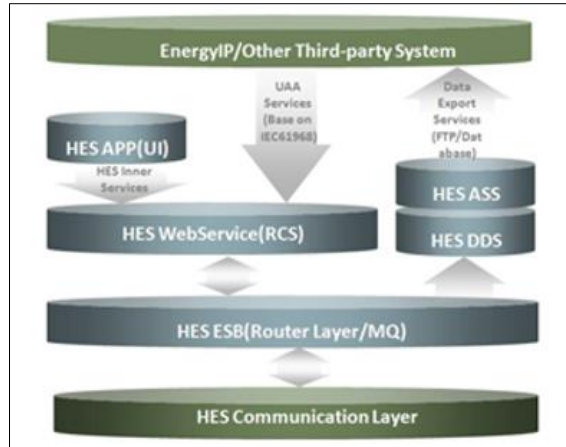


Fig 8. UDIS configuration



Fig.9. Screenshot MDC-GUI. Detailed meter reading analysis

## 5.2 Advanced functionalities of the MDM solution

One of the main advantages of implementing an MDM (Meter Data Management) solution is the wide range of advanced functionalities that contribute to enhancing operational efficiency and increasing data accuracy. Below, we will explore the key functionalities of the MDM platform used by Company, which are essential for optimal consumption data management.

### 5.2.1 EnergyIP data model standard

Master data consists of information about utility assets and customers, such as devices, service delivery points, consumption places, registers, current transformers (CTs), profile IDs, delivery points, and the relationships between them. The structure of such a data model in the MDC is shown in Figure 10. For example, a device is linked to its location and its specific user.

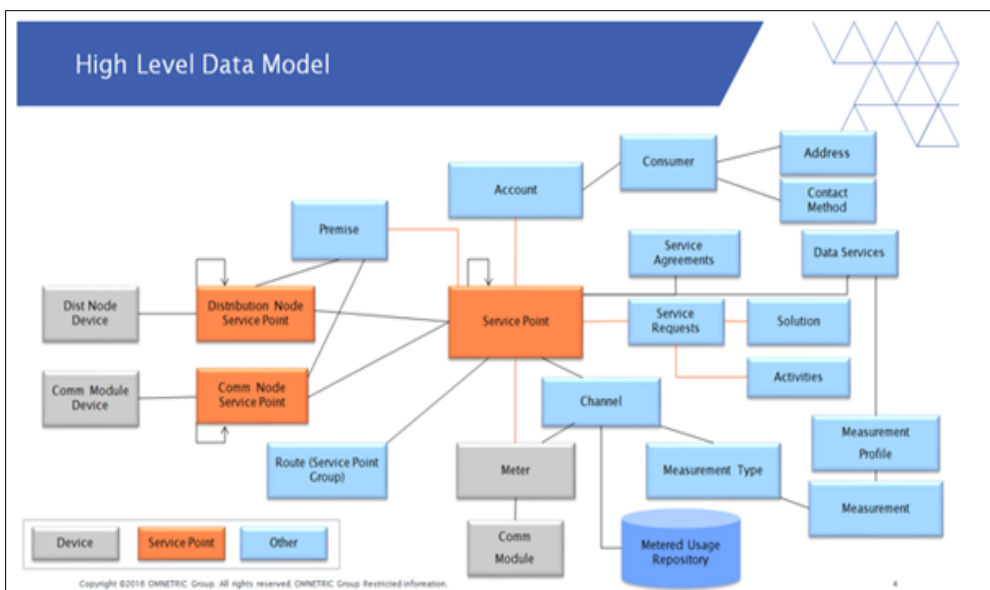


Fig.10. MDM data model

### 5.2.2 Estimate Edit Validation Module

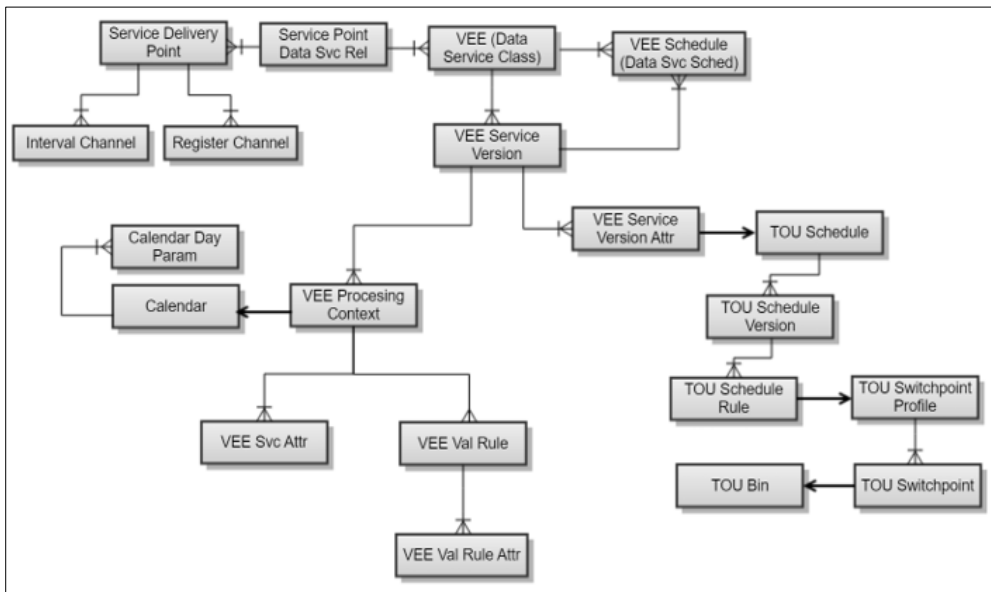
In their analysis, the authors also emphasized the VEE module. The VEE module (Validation, Estimation, and Editing module) service version

defines the validation rules and the order in which they are applied for a specific measurement. It also specifies the actions to be taken when these rules fail. These validation rules are configured and updated by Company and implemented by the developer as part of EnergyIP configuration.

Within the VEE service, various contexts are defined, containing a comprehensive set of validation, estimation, and scaling rules.

Globally, the configured VEE service applies to all meter readings for all service delivery points (SDPs). If configured as global with exceptions, the VEE process first checks for any VEE service attached to the SDP.

The data model presented in Figure 11 explains the objects involved in the validation process and the relationships between the different objects: register reading validation, interval data validation, VEE rules for MMR (Manual Meter Reading) meters, VEE rules for SMART meters, and substitution values such as interpolation and extrapolation.



**Fig.11.** Meter reading validation data model

### 5.2.3 Reading Profiles Measurement

Similar as a service point is the logical central point of the data model for assets and relationships in EnergyIP, a measurement type is the central point for all meter reading data. The measurement type serves as the lowest

common denominator for collecting and storing meter reading data within EnergyIP or for providing meter data externally.

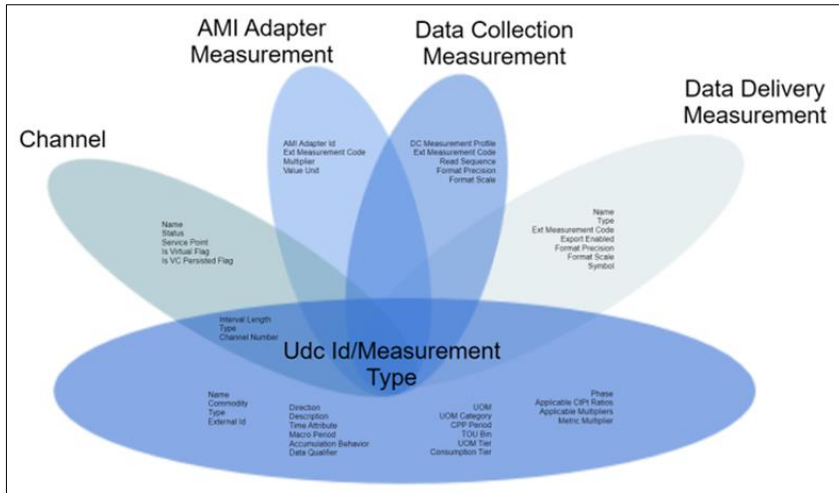
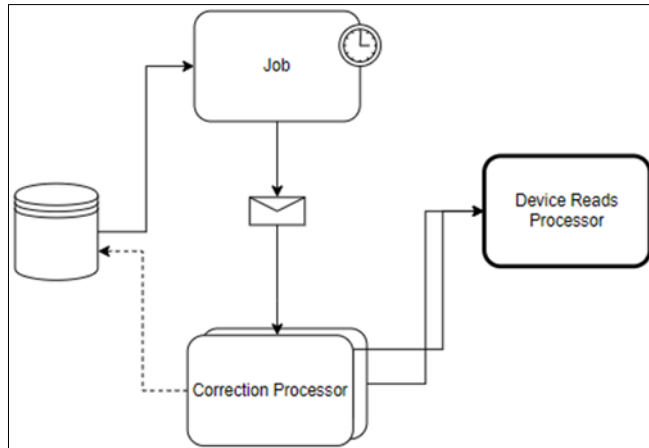


Fig.12. Types of measurement

The measurement profiles for billing shown in Figure 12 are defined as measurements of the Data Delivery Service (DDS), also known as billing determinants, which represent the measurement data provided by the EnergyIP data delivery engine and are typically used for billing purposes.. Specifically, Company defines data collection, data delivery, and export measurement profiles tailored to various types of metering: conventional, smart, and AMR (Automatic Meter Reading).

One of the advanced features of the MDM (Meter Data Management) solution is the daily interval data correction, following the model described in Figure 13. This refers to the automated process of verifying and correcting consumption data, particularly data affected by errors or temporary signal losses. For example, if a meter fails to transmit data within a specified interval or if there are anomalies in the received data, the algorithms applied within the MDM platform can detect these errors and correct them by interpolating or adjusting the data to reflect actual consumption. Automated data correction not only improves data quality but also reduces the time required for error identification and correction.

The correction job will be executed either on a scheduled basis or manually. Several parameters can be configured through a graphical interface within the MDM platform.



**Fig.13.** Values correction job

#### 5.2.4 Loss Calculation and Reactive Analysis

The authors also recognize the relevance of loss calculation and reactive analysis. Another essential aspect of the MDM (Meter Data Management) solution is loss calculation and reactive analysis. The MDM platform enables monitoring and analysis of energy losses within the network. Reactive analysis refers to the identification of abnormal behaviors in the network, such as inefficient consumption or equipment failures, which can contribute to energy losses.

For loss calculation, the following principles are applied:

- The network topology of connections between cables/lines, transformers, and meters.
- Fixed losses are calculated per line/cable and transformer.
- Consumption-dependent losses for cables and lines are calculated for all cables assembled and all lines together.
- Consumption-dependent losses for transformers are allocated based on the values on the identification plate or the known relationship with the meter.
- The resulting loss is distributed among the meters according to active energy.

Applicable cases in the company are: A meter assigned to a transformer; A meter assigned to "n" transformers; "n" meters allocated to a transformer.

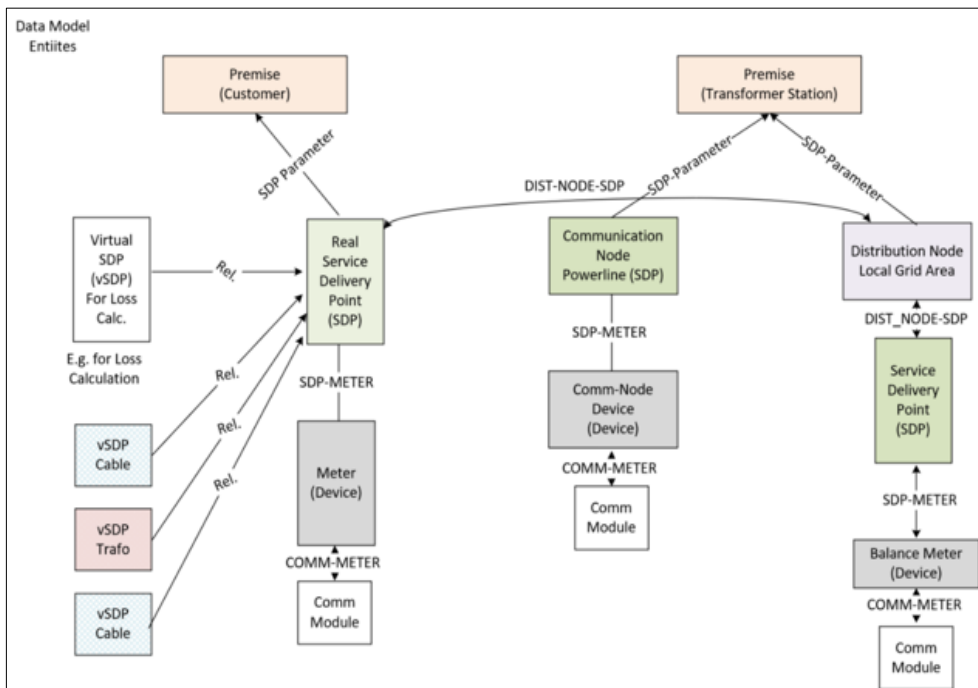
In all the mentioned cases, the allocation also refers to cables and networks.

### 5.2.5 Data Synchronization

Another critical aspect of modern MDM (Meter Data Management) systems remarked by authors is data synchronization across various interconnected applications and systems. Ensuring data consistency between the central MDM platform, billing systems, and energy forecasting systems is essential to avoid errors in the billing process and to obtain accurate consumption forecasts. Through data synchronization, the MDM platform ensures that information from all sources is updated and correct, thereby providing a unified view of energy consumption.

When SAP serves as the primary customer information system and EnergyIP is the solution for unifying meter data, SAP is used as the master system for all primary data records, while EnergyIP acts as the repository for all data coming from meters through AMI (Advanced Metering Infrastructure) systems.

Maintaining synchronization between these two systems, as shown in Figure 15, is essential for seamless operation.



**Fig.15.** The entities of the data model and the relationships between them

### 5.2.6 Company Activity Processes

The workflows is defined for each of the original activity processes of company, specifically:

- Installation of a new meter (new connection)
- Installation of a data concentrator
- Meter uninstallation
- Meter replacement
- Data concentrator replacement
- Meter reading for purposes other than billing
- Meter reading for billing purposes
- Move-In / Move-Out
- Meter connection/disconnection
- Meter operations
- Event management
- Firmware update
- Faulty meter scenarios

## 6. Benefits and Impact of Implementing the MDM Solution

The implementation of the Meter Data Management (MDM) solution at the company has had a significant impact on the company's operational performance, end-user experience, and data security. Furthermore, the MDM solution has proven essential for meeting future requirements and supporting the company's development projects, including the integration of over 1 million smart meters within the distribution network. As a result, the MDM solution not only addresses current needs but also positions itself as a strategic necessity for the success of future projects. The implementation view of the Device Reading Processor, as shown in Figure 16, illustrates how data flows are managed and processed within the MDM platform.

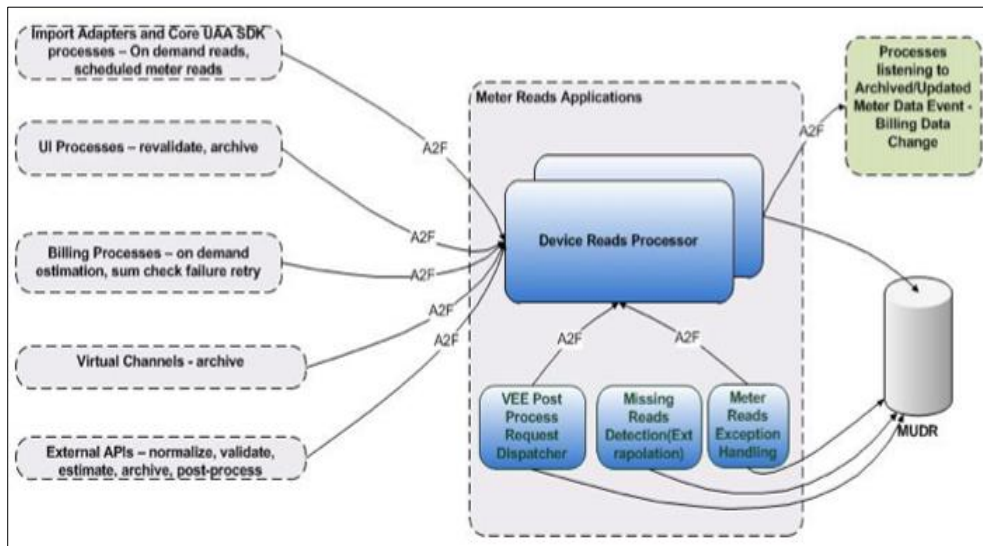
One of the most notable benefits of implementing the MDM solution is the optimization of operational workflows. Company has successfully reduced processing times, improved efficiency, and minimized costs associated with managing consumption data. The MDM system has significantly contributed to the automation of data collection and validation processes.

The implementation of the MDM solution has had a substantial impact on data security. In an ever-evolving energy sector, protecting data is essential

to prevent unauthorized access and maintain information integrity. The MDM solution adopted by Company utilizes advanced security protocols, ensuring the protection of sensitive data against cyber-attacks.

An important component noted by the authors is that the MDM solution employs data encryption both in transit and at rest, ensuring that sensitive information, such as customer energy consumption data, remains protected. This measure is crucial for safeguarding data confidentiality and mitigating the risks of unauthorized access. Another important aspect of the MDM solution is the implementation of stringent access control measures. These enable the company to manage who can access or modify data, ensuring that only authorized individuals have access to sensitive information.

The implementation of the MDM solution has significantly enhanced the end-user experience. Customers have benefited from greater transparency regarding their energy consumption, having access to accurate, real-time information. This enables customers to manage their energy use more effectively and make informed decisions.



**Fig.16.** Device Reading Processor Implementation View

The MDM solution implemented at Company has not only enhanced operational performance and data security but also represents a strategic necessity for the success of the company’s future projects, particularly in the context to integrate 1 million new smart meters. In the coming years, Company is preparing for the deployment of a significant number of smart

meters. These devices will collect large volumes of real-time data that must be efficiently gathered, processed, and stored.

One of the key reasons why MDM is critical for the future is its scalability. As Company continues to deploy smart meters and expand the network, the MDM solution will be capable of adapting and managing the increasing data volume. The platform's flexible architecture allows for the rapid integration of new devices without compromising system performance (Fig.16). As a result, the MDM solution will support network expansion and effectively facilitate the implementation of future projects.

## **7. Development Perspectives, Lesson Learned and Challenges**

The authors highlight that the implementation of the Meter Data Management (MDM) solution represents only the first step in an ongoing evolution of energy consumption data management. In this chapter, we will explore the development perspectives of MDM solutions, as well as the lessons learned from the implementation of this advanced system. Additionally, we will highlight key conclusions regarding the impact of the solution on the company's operations and on end-users

### **7.1 *Continuous Development of MDM Solutions***

MDM solutions have demonstrated a significant impact on operational efficiency, but to address future challenges and support the transition to a sustainable energy system, these solutions must continuously evolve.

Another development direction for MDM solutions is the enhancement of interoperability with other platforms and systems within smart grid networks, including energy management platforms and smart distribution grid. This type of integration will enable better coordination between network operators and consumers, contributing to the optimization of energy resources.

Furthermore, it will facilitate flexible demand response management, allowing consumers to adjust their energy usage based on real-time prices or network requirements, thus reducing costs and enabling more efficient resource utilization. As MDM solutions become increasingly sophisticated, they will also enable greater automation of billing processes, based on real-time consumption data. In the future, MDM systems could integrate dynamic pricing models that respond automatically to energy market fluctuations. This type of dynamic billing could reflect the actual cost of energy at the time of

consumption, providing greater transparency and encouraging users to adopt more responsible consumption behaviors.

## ***7.2 Lessons Learned from the Implementation of the MDM Solution***

The implementation of the MDM solution at Company has provided a series of valuable lessons that will guide future implementations and can be applied to similar projects within the energy industry

### **7.2.1 The Importance of Planning and Change Management**

One of the most important aspects of implementing a complex MDM system is meticulous planning and change management. The data migration process from traditional systems to the MDM solution was a critical step that required a careful approach to ensure that historical data was transferred accurately and that the system operated as expected. The key lesson learned here is that the planning phase must include a detailed risk assessment, a well-defined testing strategy, and a clear training plan for the involved staff.

### **7.2.2 Flexibility and Scalability of the Solution are Essential**

The implementation of MDM in a large distribution network, such as that of Company, demonstrated how critical flexibility and scalability of the solution are. Given the high volume of data and the need for integration with various systems, the MDM solution must be capable of rapidly adapting to changes in the network and supporting the future implementation of projects, such as the integration of a large number of smart meters. A scalable infrastructure is essential to meet the company's growth demands and to integrate new technologies

### **7.2.3 Flexibility and Scalability of the Solution are Essential**

Another key point was the close collaboration between IT and operational teams. The MDM implementation was not only a technological project but also a cultural change project that required the involvement of the entire organization. Operational teams contributed to defining requirements and played an important role in testing and validating the solution, while IT teams focused on technological integration and system performance optimization. The

lesson learned is that communication and collaboration between departments are essential for the success of a project of this magnitude.

#### 7.2.4 The Importance of Data Security and Privacy Protection

The MDM solution also highlighted the importance of protecting customer consumption data and implementing adequate cybersecurity measures. In an era where sensitive information is collected and managed within a digitized system, ensuring the confidentiality and integrity of data is fundamental. The lesson learned is that security must be a constant priority in digitalization projects, with proactive protection measures such as robust encryption and authentication.

### 7.3 *Challenges in MDM Solution Implementation*

#### 7.3.1 Diversity of Equipment and SMART Meter Manufacturers

One of the major challenges was managing the diversity of equipment installed in the field. Smart meters come from multiple manufacturers, each using different specifications and communication protocols. Integrating these devices into a centralized MDM platform required the development of standardization mechanisms, which involved significant costs and resources. For example, some older meters needed hardware or software adaptations to become compatible with the system. This process was not only technically complex but also time-consuming

#### 7.3.2 Organizational Change Management

The introduction of an MDM solution involved fundamental changes to operational processes and employees' working methods. Transitioning from traditional manual data collection methods to a digitized system faced resistance from staff who had to learn new technologies. Additionally, technical teams had to adopt new maintenance methodologies and operate complex monitoring systems. The initial lack of adequate training programs led to delays in the efficient use of the platform, highlighting the importance of well-thought-out change management strategies.

#### 7.3.3 Ensuring Operational Continuity During the Transition

The shift from traditional systems to an advanced MDM platform represented a major challenge in maintaining operational continuity. Existing

systems had to run in parallel with new ones during the data migration and device integration. This required seamless data synchronization between the two systems to avoid information loss or billing delays.

## **8. Conclusions**

The implementation of the Meter Data Management (MDM) solution was an important step in the company's digital transformation and the optimization of energy consumption data management. This solution delivers substantial benefits in terms of operational efficiency, data security, and end-user experience. Furthermore, the MDM implementation aligns with the company's objectives to adopt innovative and sustainable technologies, facilitating the transition toward a more efficient and transparent energy system.

The implementation of the MDM solution marks a significant step in modernizing and digitizing the electricity distribution network, having a profound impact on the operability and efficiency of the system. In a dynamic and continuously changing global energy context, with increasing focus on sustainability and optimization, energy data management solutions are becoming essential to meet market and end-user demands.

By adopting an efficient MDM system, Company has been able to centralize and automate data collection and analysis processes, eliminating errors and long processing times typical of traditional systems. As a result, the company has achieved a range of operational benefits, including reduced billing times, increased data reliability, and optimized operational costs. These improvements have had a direct impact on end-users, who benefit from greater transparency and accurate, prompt billing. Moreover, the MDM solution contributes to more efficient resource management and energy loss reduction, a crucial objective in the transition to renewable energy sources.

In conclusion, MDM systems are not just a technological tool but a key transformation driver in the energy sector. They represent the foundation on which a sustainable and efficient energy system is built, capable of meeting the challenges posed by rising energy demand, legislative changes, and rapid technological progress. The company has demonstrated through the successful implementation of this solution that digitization and advanced data management are the pillars upon which the

future of the energy industry will be built. The implementation of MDM prepares this company's way for a future where efficiency, transparency, and sustainability are fundamental priorities for energy providers and their users

## Acknowledgements

Acknowledgements to the co-authors who contributed significantly to the development of this work by defining the functional requirements, integrating IT solutions, and aligning the project with the company's strategic objectives. Their professional expertise and experience were essential in ensuring coherence between operational processes, IT requirements, and the specific regulations of the energy sector.

## REFERENCES

- [1] *IDIS Specifications (Interoperable Device Interface Specifications)* - IDIS specifications have been integrated into the DLMS User Association framework. IDIS Association. (2021).  
IDIS Package 3 Specification. Available at: <https://www.idis-association.com>
- [2] *IEC 62056 Standard (DLMS/COSEM)* - This standard defines the protocols for exchanging data in smart metering systems.  
DLMS User Association. (2022). Core Specifications. Available at: <https://www.dlms.com>
- [3] *IDC White Paper on Data Exchange Standards* - Provides an analysis of global adoption of DLMS/COSEM-based smart metering.  
Segalotto, J.-F. (2023). Smart Meter Rollouts and Data Exchange Standards: A New Analysis by IDC. Available at: <https://www.dlms.com/data-exchange-standards-analysis/>
- [4] *Specific Internal Documents*

## Authors' biographies



**Mihaela IORDACHE** Mihaela Iordache has over 18 years of experience in the energy sector. Her expertise includes drafting technical documentation, integrating complex systems, and supporting the transition to new operational models.

In 2023, as Project Manager, she coordinated the implementation of the Meter Data Management (MDM) system. Throughout her career, she has been actively involved in optimizing critical processes, promoting digitalization, and transforming operations.

Through her initiatives, Mihaela has contributed to streamlining activities, reducing operational costs, and aligning with the requirements of the modern energy market, thereby strengthening her reputation as an industry expert. She currently holds the position of Strategy and Performance Lead for Systems and Processes.

**Email:** [mihaela.iordache@delgaz-grid.ro](mailto:mihaela.iordache@delgaz-grid.ro)



**Liliana SIRGHIE** holds the position of Division Director within the Contracts and Energy Management Department at Delgaz Grid, with responsibilities for the strategic coordination of energy processes from metering to billing. With over 30 years of solid experience in the energy sector, she drives excellence and performance in the complex process of energy management.

Her strategic competencies and focus on streamlining processes, achieving performance indicators, and advancing digital and technological progress contribute significantly to the development and implementation of the company's energy strategies, supporting medium- and long-term objectives. She is valued for her analytical approach and results-oriented mindset in the context of the specific challenges of the energy sector.

**Email:** [liliana.sirghie@delgaz-grid.ro](mailto:liliana.sirghie@delgaz-grid.ro)



**George BACIU** has over 20 years of experience in the energy sector. His expertise includes project management, system integration, drafting technical specifications, and managing maintenance and support contracts.

In his current role as Senior Product Manager, he oversees third-party contracts for IT system maintenance, ensuring service quality and operational continuity. Over the years, George has successfully led multidisciplinary teams, managed complex vendor relationships, and delivered technology solutions aligned with business needs.

His strategic approach has enabled the adoption of innovative practices, improved resource utilization, and reinforced operational resilience. Known for his ability to bridge technical requirements with business objectives, George continues to contribute to the sustainable development and competitiveness of the organizations he works with.

**Email:** [george.baciu@delgaz-grid.ro](mailto:george.baciu@delgaz-grid.ro)